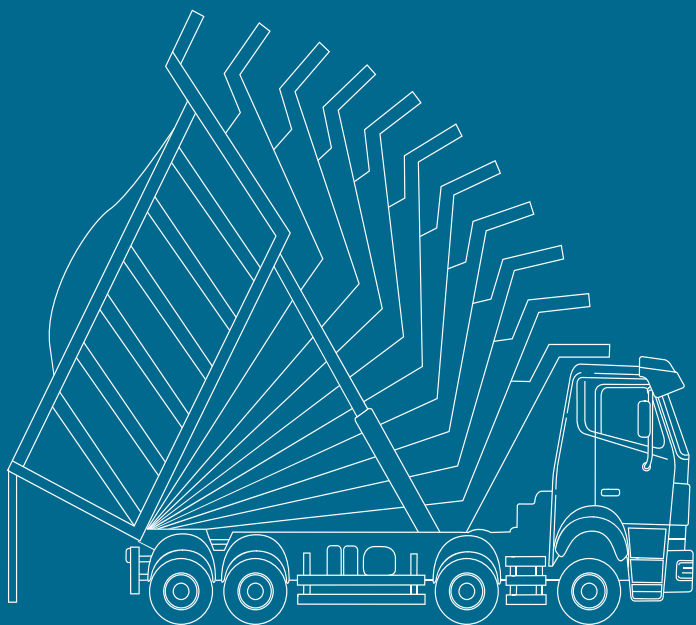


**OKULEN**<sup>®</sup>

Are you sticking  
to your load?

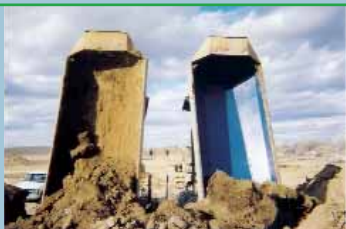


# Clean, safe, fast:

## **Unloading with OKUSLIDE, the dump truck liner from OKULEN.**

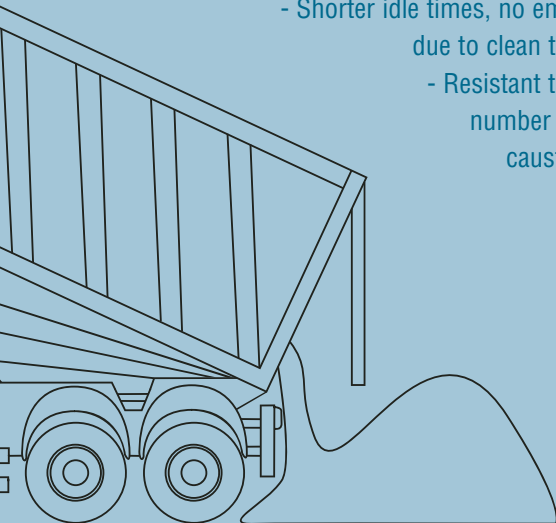
A worn truck bed not only makes unloading more difficult, it is also unsafe, because the load initially starts to move at extreme dump angles. With OKUSLIDE, the subsequently installable plastic truck body liner, loads dump smoothly from the truck bed fast and without noteworthy residues.





## **OKULEN® OKUSLIDE – the liner that moves loads:**

- Excellent gliding properties for fast and easy unloading.
- Extremely high wear resistance – minimum 50% less volume wear than highly wear resistant steels.
- No adhesion of sticky materials, even hot asphalt doesn't cake, no freezing.
  - Fast and low-cost installation.
    - Safe unloading due to lower dump tilt angle.
    - Shorter idle times, no empty trips due to clean truck bed.
    - Resistant to a large number of acids and caustic solutions.



# It pays to choose OKUSLIDE

---

**Whether new dump trucks or replacement truck beds – benefit from the cost advantages of OKUSLIDE.**

Double the abrasion resistance compared to conventional steel truck beds – this alone pays for itself in no time, not to mention daily savings due to faster unloading, less need for cleanout and fewer empty trips.

Reasons that speak for OKUSLIDE. The additional investment also pays for **new dump trucks** that are not lined as standard.

OKUSLIDE is also attractive for **second-hand trucks**, where the truck bed needs repairing or replacing. OKUSLIDE is the most cost-effective way to line dumper trucks.

## Standard types



**OKUSLIDE**  
**Premium Red Heat 354**



**OKUSLIDE**  
**Premium Blue 589**



**OKUSLIDE**  
**Top Grey 732**



**Our lining for all applications:  
OKUSLIDE Premium Blue 589.**



**Designed for the harshest field  
conditions: OKUSLIDE Premium Red  
Heat 354 is tough enough to even  
withstand tar.**



**Benefit from the cost advantage:  
OKUSLIDE Top Grey 732 – where  
high wear resistance is not  
a main requirement.**



# Roll in, install, finished:

---

## That's how easy installation is.

Nothing could be more flexible: Any dumper truck can be lined with OKUSLIDE – anywhere. With a thickness of 10 to 15 mm, the material can be rolled. We can send you your new truck bed for self-installation. Our installation team will also be happy to carry out installation locally or direct at OKULEN.

At OKULEN, it goes without saying that installation is not only fast, but also more cost-efficient than welding a new truck bed, for example.

If you should have any questions regarding OKUSLIDE, please call us. We'll be happy to help.

For further information visit: [www.okuslide.com](http://www.okuslide.com)



We can send our linings anywhere in the world as panels or rolled endless sheet.



**Whether locally or at our factory – our installation team is very flexible.**



**Self-installation is also not a problem: We supply all the necessary materials and tools.**



**Ottensteiner Kunststoff GmbH & Co. KG**

Postbox 3151  
48672 Ahaus-Ottenstein  
Germany

Tel. +49 (0)2561 9824-0  
Fax +49 (0)2561 9824-99  
Fax +49 (0)2561 9824-88 (Export)

info@okulen.com  
www.okulen.com

**Production and Administration - Factory II**

Im Garbrock 39  
48683 Ahaus-Ottenstein  
Germany

**Production - Factory I**

Textilstraße 27  
48683 Ahaus-Ottenstein  
Germany

**TSE-OKULEN Americas - L.L.C.**

4370 112th Terrace North  
Clearwater - Florida 33762  
USA

Tel. +1 (727) 456 2890  
Fax +1 (727) 456 2891

info@tse-ok.com  
www.tse-ok.com